



# **QATAR CROSS-COUNTRY RALLY**

**17 / 22 April 2017**

## **SUPPLEMENTARY REGULATIONS**

**Qatar Motor & Motorcycle Federation  
Head Quarters in Losail Circuit  
Al Wusail, North Relief Road  
PO Box 8708, Doha Qatar  
Tel: +974 443 79 885  
Fax: +974 443 79 732  
e-mail: [info@qmmf.com.qa](mailto:info@qmmf.com.qa)  
website: [www.qmmf.com](http://www.qmmf.com)**

## TABLE OF CONTENTS

---

	<u>Page</u>
<b>1. Introduction</b>	<b>2</b>
<b>2. Organisation</b>	<b>2</b>
<b>3. Programme</b>	<b>3</b>
<b>4. Entries</b>	<b>5</b>
<b>5. Insurance</b>	<b>7</b>
<b>6. Identification</b>	<b>7</b>
<b>7. Advertising</b>	<b>7</b>
<b>8. Tyres</b>	<b>8</b>
<b>9. Fuel – Refuelling</b>	<b>8</b>
<b>10. Service</b>	<b>8</b>
<b>11. Administrative checks</b>	<b>9</b>
<b>12. Scrutineering</b>	<b>10</b>
<b>13. Briefing</b>	<b>10</b>
<b>14. Selective sections</b>	<b>11</b>
<b>15. Official itinerary</b>	<b>11</b>
<b>16. Other procedures</b>	<b>12</b>
<b>17. Identification of officials</b>	<b>13</b>
<b>18. Prizes</b>	<b>14</b>
<b>19. Protests and Appeals</b>	<b>14</b>
<b>Appendix 1 – Itinerary</b>	<b>15</b>
<b>Appendix 2 – Advertising / Identification numbers</b>	<b>16</b>
<b>Appendix 3 – Competitors Relations Officer</b>	<b>17</b>
<b>Appendix 4 – Equipment and Safety</b>	<b>18</b>
<b>Appendix 5 – GPS / Instructions</b>	<b>19</b>
<b>Appendix 6 – Vehicle to vehicle alarm system / Instructions</b>	<b>20</b>
<b>Appendix 7 – Tracking system &amp; Accident response / Instructions</b>	<b>21</b>

## 1. INTRODUCTION

---

The rally will be run in compliance with the FIA International Sporting Code and its appendices, the 2017 FIA Cross-Country Rally General Prescriptions, the regulations of the 2017 FIA World Cup for Cross-Country Rallies, the National Sporting Regulations which comply with the FIA regulations and these Supplementary Regulations.

Modifications, amendments and/or changes to these Supplementary Regulations will be announced only by numbered and dated bulletins (issued by the organizer or the stewards).

The rally will be twinned with a motorcycle FIM event and an ASN national event both with separate supplementary regulations.

Additional information will be published in the Rally Guide.

The 2017 FIA Cross-Country Rally General Prescriptions can be found at [www.fia.com](http://www.fia.com)

In the event of any dispute concerning the interpretation of these regulations, only the English text will be binding.

### **Eligibility to score points in the FIA World Cup / FIA Registration**

In order to score points in the FIA World Cup classifications, competitors have to register with the FIA before the closing date for entries of the first World Cup rally/baja entered (Arts 1.3 and 1.4 of the 2017 Sporting Regulations of the FIA World Cup for Cross-Country Rallies).

The online registration form is available in the area of the FIA website dedicated to the World Cup ([www.fia.com](http://www.fia.com)).

The registration is free of charge.

## 2. ORGANISATION

---

### 2.1 Titles for which the rally counts

#### FIA titles

2017 FIA World Cup for Cross-Country Rallies

#### ASN titles

Qatar National Baja Championship

### 2.2 Visa numbers – FIA and ASN

FIA visa No: **4CCR/210317**

ASN visa No: **145/SCCR/2017**

### 2.3 Organiser's name, address and contact details (permanent office)

Qatar Motor & Motorcycle Federation

Losail Circuit

Al Wusail, North Relief Road

PO Box 8708

Doha / Qatar

Tel.: +974 443 79 885 Fax: +974 443 79 732

e-mail: [info@qmmf.com](mailto:info@qmmf.com)

website: [www.qmmf.com](http://www.qmmf.com)

## 2.4 Organisation committee

Chairman	Abdulrahman Al Manni
Members	Khalid Al-Remaihi Sultan Al Morraikhi

## 2.5 Stewards

Chairman	Manuel VIDAL (ESP)
FIA Steward	Uwe SCHMIDT (DEU)
ASN Steward	Sultan Al Morraikhi
Secretary to the Stewards	Sonia Martinez

## 2.6 FIA Delegates & Observer

FIA Observer	Ziad JAMOUS (FIA)
FIA Technical Delegate	Lionel Carre (FIA)
Assistant to the FIA Technical Delegate	Cristiana PACE (FIA)
Route Verification Team	Thierry MAGNALDI / Alain GUEHENNEC (FIA)

## 2.7 Senior officials

Event Manager	Franck Vayssié
Clerk of the Course	Pedro Almeida
Deputy Clerk of the Course	Rashid Al-Sulaiti
Chief Safety Officer	Jaime Santos
Chief Medical Officer	Dr. Amr Aboulwafa
Competitors Relations Officer	David Patterson
Chief Scrutineer	Gary Vincent
Service Park Coordinator	Albert Bellido
Results Coordinator	Mário Bandeira (Cronobandeira)
Secretary of the Meeting	Angelene Lapuz
Media Relations Officer	Neus Ramos
Logistic Manager	Mawia Zeyada

## 2.8 HQ location and contact details

Losail Circuit  
Doha / Qatar  
Tel.: +974 443 79 885  
Fax: +974 443 79 732  
e-mail: info@qmmf.com

## 2.9 Official Notice Board location

Losail Circuit  
Doha / Qatar

## 3. PROGRAMME

### BEFORE THE RALLY WEEK

#### Monday, 06 February

	Issuing of the Supplementary Regulations	Website
	Opening date for entries	Rally Office

Monday, 06 March		
17.00h	Closing date for entries with reduced fees	Rally Office
	Issuing of the Rally Guide	Website
Monday, 27 March		
17.00h	Closing date for entries	Rally Office
Monday, 10 April		
17.00h	Publication of the entry list	Rally Office
Tuesday, 11 April		
08.00h	Bivouac opens	Losail Circuit

## RALLY WEEK

Monday, 17 April		
08.00/20.00h	Rally Office opens	Losail Circuit
From 08.30h	Administrative checks / Collection of materials and documents ( <i>see article 11</i> ) (*)	
From 11.00h	Scrutineering ( <i>see article 12</i> ) (*)	
Tuesday, 18 April		
08.00/20.00h	Rally Office opens	Losail Circuit
08.00/11.00h	Issue of the road book for Leg 1 Reconnaissance of the Super Special Stage ( <i>see article 16.2</i> )	
11.30h	1 <sup>st</sup> Stewards Meeting	
12.30h	Publication of the start list for Leg 1	
14.00h	Pre-event Press conference	
15.00h	Pre-event briefing	
16.15/16.45h	Cars enter the pre-start holding area (*)	
17.00h	Start of the Rally	
18.15h	The first ten classified at the Super Special Stage will choose their start positions for Leg 2	
19.00h	Publication of the start list for Leg 2	
Wednesday, 19 April		
05.30/20.00h	Rally Office opens	Losail Circuit
07.30h	Start of Leg 2	
18.00h	Publication of the start list for Leg 3	
Thursday, 20 April		
05.30/20.00h	Rally Office opens	Losail Circuit
07.30h	Start of Leg 3	
18.00h	Publication of the start list for Leg 4	

**Friday, 21 April**

05.30/20.00h	Rally Office opens	Losail Circuit
07.30h	Start of Leg 4	
18.00h	Publication of the start list for Leg 5	

**Saturday, 22 April**

05.00/20.00h	Rally Office opens	Losail Circuit
07.00h	Start of Leg 5	
After TC5B	Post-event scrutineering	
14.30h	Post-event Press conference	
18.00h	Publication of the Provisional Final Classification	
18.30h	Finish Ceremony	

*\* Schedule to be published in a bulletin*

## **4. ENTRIES**

### **4.1 Closing date for entries**

- With reduced fees: Monday, 06 March 2017 at 17h00 (local time)
- With normal fees: Monday, 27 March 2017 at 17h00 (local time)

### **4.2 Entry procedure**

Entries must be submitted as specified in Article 11 of 2017 FIA Regional Rally Sporting Regulations.

Those wishing to take part in the rally must send the official entry form, duly completed and signed to the rally secretariat. The entry form is available on the organizer's website [www.qmmf.com](http://www.qmmf.com).

Entries will be accepted only if accompanied by:

- The total entry fees, a proof of bank transfer of the total entry fees or receipt issued by the competitor's National Sporting Authority
- Photocopies of the competitor, driver and co-driver competition licenses
- Photocopies of the driver and co-driver driving licences
- Photocopy of the first page of the car homologation form for the entered car (for T2 vehicles only).
- FIA Technical Passport no. of the entered car

In compliance with the FIA International Sporting Code, foreign entrants/drivers must be in possession of the approval of their own ASN which must accompany the entry form or be produced at administrative checks at the latest. With the submission of the entry form, each foreign entrant and/or driver/co-driver declares that he/she is in possession of this authorisation.

### **4.3 Number of competitors accepted**

The maximum number of entrants will be 100. If more than 100 entries are received the organizer reserves the right to decide which entries among the non-priority drivers will be accepted.

#### 4.4 Groups and Classes

<u>Group &amp; Class</u>	<u>Vehicle</u>
T1.1	T1 4x4 Petrol
T1.2	T1 4x4 Diesel
T1.3	T1 4x2 Petrol
T1.4	T1 4x2 Diesel
T2.1	T2 Petrol
T2.2	T2 Diesel
T3.1	T3 4x4
T3.2	T3 4x2
T4.1	T4 with a nominal cylinder capacity of 10.000 cc or over
T4.2	T4 with a nominal cylinder capacity of less than 10.000 cc

There will be a two-wheel drive category within Group T1.

#### 4.5 Entry fees / Entry packages

	<b>Overseas Entries</b>		<b>Gulf &amp; Qatar Entries</b>	
	<b>T1, T2 &amp; T3</b>	<b>T4</b>	<b>T1, T2 &amp; T3</b>	<b>T4</b>
<b>Entry Fee</b>				
Until 06 March 2017	US\$ 6.800	US\$ 8.100	QAR 10.600	QAR 14.100
Until 27 March 2017	US\$ 8.200	US\$ 9.700	QAR 11.800	QAR 16.900
<b>Included</b>				
Fuel	600 l	600 l	600 l	600 l
1 night at hotel (Doha)	YES	YES	YES	YES
5 nights bivouac	YES	YES	YES	YES
Visa (if required) <sup>(1)</sup>	YES	YES	YES	YES
Water	YES	YES	YES	YES
Liaison Officer Services	YES	YES	YES	YES
Repatriation insurance	YES	YES	NO	NO
Public Liability insurance	YES	YES	YES	YES
Road legal insurance <sup>(2)</sup>	YES	YES	NO	NO
<b>Not included</b>				
GPS Tracking rental <sup>(3)</sup>	175,00 €	175,00 €	175,00 €	175,00 €
GPS / Sentinel rental <sup>(4)</sup>	455,00 €	455,00 €	455,00 €	455,00 €
Shipping				
Accommodation				
Travel (flights)				
Service vehicle registration (service book & plates)	US\$ 340	US\$ 340	QAR 1,250	QAR 1,250
Service personnel (per person) 5 nights bivouac	US\$ 370	US\$ 370	QAR 1,360	QAR 1,360
Visa for non-competitor <sup>(1)</sup>	US\$ 55	US\$ 55	QAR 200	QAR 200

- (1) To be applied by 27 March the latest. After this date it is not possible to process the visa
- (2) 15 days
- (3) Competitor is required to pay a refundable deposit of 250,00 €
- (4) Competitor is required to purchase fitting kit, bracket, power lead and antenna and to pay a refundable deposit of 1.700,00 €.

#### **4.5 Payment details**

All entry fees must be paid by bank transfer, to the following bank account:

Qatar Motor & Motorcycle Federation (QMMF)

Bank name: Qatar International Islamic Bank

Branch: Main Branch, Grand Hamad Avenue, P.O.Box 664, Doha, Qatar.

Account Number: 1111-410066-001

Swift Code: QIIBQAQA

A copy of the bank transfer has to be attached to the application form. Please ensure that the entrant's name and account holder are included as reference on all bank transfers.

Any bank charges incurred must be paid by the entrants in addition to the entry fees.

#### **4.6 Refunds**

Entry fees will be refunded in full:

- To candidates whose entry has not been accepted.
- In the case of the rally not taking place.

The Organisers may refund 50% of the entry fees to those entrants who, for reasons of force majeure (duly certified as such by their ASN), were unable to start the rally.

### **5. INSURANCE**

---

As per article 35 of the FIA 2017 Cross-Country Rally General Prescriptions.

- 5.1** Competitors are reminded that only damage caused to third parties by the organizers and the entered drivers is covered by the insurance policy taken by the Organization. Injury to the drivers themselves or damage to participating cars is not covered by this insurance.
- 5.2** Entrants and competitors are free to take on at their own convenience any individual insurance policy that they deem fit, independently from the above mentioned liability insurance.
- 5.3** By submitting their entries, the competitors, drivers and car owners waive any claims or rights to pursue action for damages in connection with the event against the organizer.
- 5.4** The service vehicles, even those bearing special plates issued by the organizers, may never be considered as official participants in the rally. They are therefore not covered by the insurance policy of the rally and remain the sole responsibility of their owner.
- 5.5** The coverage limit per any one occurrence is US\$10.000.000 (US\$10.000.000 in the aggregate).



## 6. IDENTIFICATION

---

As per article 15 of the 2017 FIA Cross-Country Rally General Prescriptions.

Identification numbers and rally plates must be fitted to the car for scrutineering and must be visible for the duration of the rally.

## 7. ADVERTISING

---

As per article 16 of the 2017 FIA Cross-Country Rally General Prescriptions.

### 7.1 Organizer's advertising

The organizer's advertising is detailed in Appendix 2 of these regulations.

### 7.2 Advertising restrictions

No political, religious or abusive advertising is permitted.

The advertising of tobacco (or related products), alcohol and/or pornography is forbidden on cars, competition/service equipment and on the team members' outfits.

## 8. TYRES

---

See article 12 of the 2017 FIA Cross-Country Rally General Prescriptions.

## 9. FUEL - REFUELLING

---

See articles 33 & 34 of the 2017 FIA Cross-Country Rally General Prescriptions.

Refuelling is only permitted:

- in the bivouac in an official refuelling zone,
- in the fuel stations indicated in the road book using that station's fuel only
- after SS2, SS3 and SS5 in an official remote refuelling zone indicated in the road book (a maximum of 40 litres of fuel will be provided to each rally car).

The official refuelling zone at the bivouac will be operational during the following periods:

Monday, 17 April		15.00h / 19.00h
Tuesday, 18 April	07.00h / 11.00h	15.00h / 21.00h
Wednesday, 19 April	05.00h / 07.00h	15.00h / 21.00h
Thursday, 20 April	05.00h / 07.00h	15.00h / 21.00h
Friday, 21 April	05.00h / 07.00h	15.00h / 21.00h
Saturday, 22 April	05.00h / 07.00h	

Each official remote refuelling zone will close 15 minutes after the closing time of the previous STOP control.

All vehicles must have sufficient fuel range at least to cover 500 km between official refuelling points. An extra safety margin of 10% is recommended.

## **10. SERVICE**

---

As per article 31 of the 2017 FIA Cross-Country Rally General Prescriptions.

### **10.1 Location of the bivouac**

Losail Circuit (N 25° 29.220' E 51° 27.189')

### **10.2 Access of service vehicles to the bivouac**

From Tuesday, 11 April 2017

### **10.3 Service**

Service is permitted only at the bivouac.

The movement of service/assistance vehicles is strictly controlled and is forbidden along the route of any selective section. For any infringement of this rule a penalty of up to and including exclusion from the event may be imposed by the Stewards of the Meeting on the competitor for whom the transgressors are servicing.

- 10.4** The competition car may be driven outside the bivouac for technical testing by a team member (including the driver and/or the co-driver), in which case tracking GPS system must be switched on.

### **10.5 Service teams and accompanying persons**

Each competitor is reminded that he/she is jointly and severally responsible for his or her service teams and accompanying persons.

Any infringements of the regulations, as published by the FIA and the organizers, that are officially observed, as well as the use of unauthorized equipment – whether or not this has a direct or indirect influence on the results or sporting running of the event – will be judged by the Stewards of the Meeting who will be entitled to decide as far as the exclusion from the event of the competitor(s) involved, directly or indirectly.

The ID bracelet, correctly attached to the wrist of competitors, crew and service personnel, is considered the only authorization to be present in an official location, service area and the bivouac. Personnel must show the bracelet at any time on request.

A crew receiving assistance in any form from third parties not identified by the wearing of the bracelet are subject to a penalty of US\$250 and a penalty at the Stewards' discretion up to and including exclusion.

## **11. ADMINISTRATIVE CHECKS**

---

### **11.1 Location**

Losail Circuit.

### **11.2 Timetable**

Monday, 17 April from 08.30h.

The exact schedule will be published by means of a bulletin.

### 11.3 Documents to be presented

#### Personal

- Original entrant's licence
- Original driver and co-driver competition licenses
- Driver and co-driver passports or identification
- ASN authorisation for foreign drivers
- Original drivers' driving licences

#### Vehicle

- Rally car's registration papers
- Car insurance cover certificate
- Car owner authorisation to participate in the rally
- FIA Technical Passport
- FIA Homologation Form (T2 and T4 vehicles)

#### Other

- Accuracy of all other information given on the entry form.
- Signing of the Indemnity Form

### 11.4 Time controls

Any delay on the presentation at the time control installed immediately before administrative checks will result in the following penalties:

from 1 to 15 minutes	100,00 €
from 16 to 30 minutes	200,00 €
> 30 minutes	300,00 €
> 60 minutes	Start may be denied

## 12. SCRUTINEERING

---

### 12.1 Location

Losail Circuit.

### 12.2 Timetable

Monday, 17 April from 11.00h.

### 12.3 Time control

Any delay on the presentation at the time control installed immediately before scrutineering will result in the following penalties:

from 1 to 15 minutes	100,00 €
from 16 to 30 minutes	200,00 €
> 30 minutes	300,00 €
> 60 minutes	Start may be denied

**12.4** When checking in at time control C3, competitors must comply with the following:

- All rally plates, competition numbers and advertising plates must be already fitted in the vehicle
- Sealing holes must have been drilled (according to Appendix 2 of the 2017 FIA Cross Country Rally General Prescriptions)
- Produce original FIA homologation form for T2 and T4 vehicles
- Produce FIA Technical Passport
- Produce safety helmets, head restraints (HANS) and safety clothing for inspection for compliance to FIA safety regulations
- Produce Safety Form (available at administrative checks) duly filled with the FIA homologation for safety helmets, head restraints (HANS) and safety clothing
- Produce GPS in working order, fitted permanently to the vehicle
- Produce the Sentinel device in working order, fitted permanently to the vehicle
- Produce 1<sup>st</sup> Aid and Safety/Survival equipment (see appendix 4)

**12.5** Please note that important technical changes have been implemented by the FIA for the current year:

- **Protection padding:** Art. 283.8.3.5 of the 2017 Appendix J
- **Fuel Tank for T2:** Arts 283.14 and 284.6.8 of the 2017 Appendix J
- **Fire extinguisher for T1:** Art. 283.7.1.1 of the 2017 Appendix J
- **Distance between roll cage and helmet:** Art. 283.8.3.2.5 of the 2017 Appendix J.
- **TV Rights – On Board Cameras:** Art. 50 of the 2017 CCRGP

### **13. BRIEFING**

---

The presence of at least one of the members of the crew in the pre-event briefing that will take place on Losail Circuit on Tuesday, 18 April at 15.00 h is compulsory.

Any crew not present at the pre-event briefing will incur a penalty of 300,00 €.

### **14. SELECTIVE SECTIONS**

---

#### **14.1 Starting intervals**

- Leg 1: minimum of one-minute intervals between all cars
- Legs 2 to 5: 2-minute intervals between the first 10 cars, the rest with one-minute intervals

#### **14.2 Starting system for selective sections**

As per articles 39.2 to 39.8 of the 2017 FIA Cross-Country Rally General Prescriptions.

#### **14.3 Passage controls**

As per article 43 of the 2017 FIA Cross-Country Rally General Prescriptions.

With the aim of ensuring safety in the passage control zone, a "Safety Zone" where the speed is limited to 30 kph maximum will be installed at each PC (as per article 43.2 of the 2017 FIA Cross-Country Rally General Prescriptions).

The crews must stop at the passage controls in order to have their time card stamped.

A 1-hour penalty shall be imposed to any crew that fails to obtain a stamp at a passage control.

#### **14.4 Safety Zone followed by a Speed Control Zone**

When a Safety Zone (see article 43.2 of the 2017 FIA Cross-Country Rally General Prescriptions) is immediately followed by a Speed Control Zone (see article 24 of the 2017 FIA Cross-Country Rally General Prescriptions), the start of which ('DZ') is coincident with the Passage Control ('PC'), the higher speed will not be enforced until 90 metres after the PC location.

#### **14.5 Maximum time in a selective section**

A maximum time will be given to complete each selective section. This time will be indicated by means of a bulletin and on the time card.

#### **14.6 Average altitude of selective sections**

The average altitude of the selective sections is less than 100 metres above sea level.

### **15. OFFICIAL ITINERARY**

---

As per articles 21, 22 and 23 of the 2017 FIA Cross-Country Rally General Prescriptions.

**15.1** A Waypoint is a geographical point defined by coordinates of longitude and latitude. There are several types of waypoints:

#### **a) WPV (Visible Waypoint)**

A waypoint, the coordinates of which are given in the road book. Travelling towards a visible waypoint, all information is displayed on the screen of the GPS. In order to validate a WPV a competitor must pass within 90 metres of it.

#### **b) WPE (Eclipse Waypoint)**

A waypoint which becomes completely visible on the GPS once the WPE, WPV, WPS or WPM preceding this WPE has been validated, whatever the distance between the WPE, WPM, WPV, WPS and the WPE should be. In order to validate a WPE a competitor must pass within 90 metres of it.

#### **c) WPM (Hidden Waypoint)**

A waypoint, the coordinates of which are not revealed to the competitors. The GPS directs the competitor towards this point only once he has come within a 1 km radius of it. In order to validate a WPM a competitor must pass within 90 metres of it.

#### **d) WPS (Waypoint Safety)**

A waypoint used to ensure competitors safety, mentioned in the Road Book and the coordinates of which are not revealed to the competitors. The GPS directs the competitor towards this point only once he has come within a 3 km radius of it. In order to validate a WPS a competitor must pass within 90 metres of it.

**15.2** Waypoints will not be used to define the route and/or to control the itinerary respect of the Super Special Stage. Only the road book shall be relied upon.

**15.3** The penalty for non-validation of a waypoint (Selective Section Start / Arrival, WPT, DZ, FZ) will be 15 minutes.

- 15.4** The total number of waypoints which may be missed in a leg is 15.  
A crew missing more than 15 waypoints in a leg will be given a fixed penalty of “one leg”.

## **16. OTHER PROCEDURES**

---

### **16.1 Issuing of time cards**

Time cards will be issued at the start of each leg.

### **16.2 Super Special Stage reconnaissance**

As per article 19.1 of 2017 FIA Cross-Country Rally General Prescriptions reconnaissance of the Super Special Stage is prohibited.

### **16.3 Super Special Stage itinerary**

The official itinerary of the Super Special Stage is that shown in the road book and defined by drawings and road direction diagrams that must be followed. Any non-compliance will be reported to the stewards.

Should a competitor accidentally leave the route he must retrace his tracks and return to that point before continuing, while complying with article 40.2 of 2017 FIA Cross-Country Rally General Prescriptions (Crews are forbidden to drive in the opposite direction to that of the selective section). Failure to do so will incur a penalty of at least 1 minute which may be increased at the discretion of the stewards.

### **16.4 Start after the application of a fixed penalty of “one leg”**

Any crew which has been given a fixed penalty of “one leg” (see article 20 of the 2017 FIA Cross-Country Rally General Prescriptions) will be assumed to re-start the rally from the start of the next leg, unless they confirm otherwise with the clerk of the course by completion of the form located in the rear of the road book and lodging it with the organizer as soon as possible before the publication of the re-start list.

### **16.5 Finish procedures**

The rally will conclude at TC5B. From this point, all cars are subject to Parc Fermé rules until the Parc Fermé is opened at the instruction of the stewards.

Post-event scrutineering will take place as soon as possible after the arrival of the cars at TC5B.

The finish ceremony and prize giving will take place at the bivouac.

Crew members must wear their approved overalls at the finish ceremony.

In the event a car is not driveable for the above procedure, this must be reported to the clerk of the course and the crew members concerned must still attend the podium finish ceremony.

### **16.6 Final Parc Fermé**

Provided that the results have become final and the stewards have authorised the Parc Fermé to be opened, all cars must be removed from Parc Fermé at the latest by 21H00 on Saturday, 22 April.

## 17. IDENTIFICATION OF OFFICIALS

---

Officials will be identified as follows:

SS Commander	Red tabard
SS Safety Officer	Orange tabard with grey stripes
SS Radio Point Marshal	Yellow tabard with blue radio symbol
SS Safety Marshal	Light green fluorescent tabard with grey stripes
SS Chief Safety Marshal	Orange tabard with grey stripes
TC / Timekeeper Officials	Light blue tabard
TC / Timekeeper Chief	Light blue tabard with «POST CHIEF» legend
Doctor	White tabard
Scrutineer	Green shirt with «Scrutineer» logo
Competitor's Relations Officer	Red tabard with «CRO» logo
Media Assistant	Blue shirt with «MEDIA» logo

## 18. PRIZES

---

### 18.1 General classification

- 1<sup>st</sup> 2 Cups
- 2<sup>nd</sup> 2 Cups
- 3<sup>rd</sup> 2 Cups

### 18.2 Two-wheel drive category (within group T1) classification

- 1<sup>st</sup> 2 Cups

### 18.3 Class awards (*only classes with a minimum of 5 entrants will be awarded*)

- 1<sup>st</sup> 2 Cups

### 18.4 Best Ladies crew (*both crew members must be female*)

- 1<sup>st</sup> 2 Cups

### 18.5 'Solo' classification (*only crews made up of one person will be considered*)

- 1<sup>st</sup> Cup

## 19. PROTESTS AND APPEALS

---

See also article 47 of the 2017 FIA Cross-Country Rally General Prescriptions.

### 19.1 Protest Fees

Sum of the protest fee: € 1.000.

If the protest requires the dismantling and re-assembly of a clearly defined part of the car (engine, transmission, steering, braking system, electrical installation, bodywork, etc.), the claimant must pay an additional deposit of € 1.000.

If the protest requires the dismantling and re-assembly of different parts of a vehicle, the claimant must pay an additional deposit of € 1.000.

### 19.2 Appeal Fees

Sum for an international appeal fee (FIA): € 6.000.

## APPENDIX 1 - ITINERARY

TC	LOCATION	SS dist.	Liaison dist.	Total dist.	Target time	1st car
----	----------	----------	---------------	-------------	-------------	---------

### Tuesday, 18 April 2017

0	Losail Circuit - START Leg 1					17:00
1	Losail		4,20	4,20	00:10	17:10
<b>SS1</b>	<b>Super Special Stage</b>	<b>4,50</b>				<b>17:15</b>
1A	SS1 STOP			4,50	(0:05)	(17:20)
1B	Losail Bivouac IN		6,30	6,30	00:10	(17:30)
<b>Leg 1 totals</b>		<b>4,50</b>	<b>10,50</b>	<b>15,00</b>		

Leg 1

### Wednesday, 19 April 2017

1C	Losail Bivouac OUT - START Leg 2					07:30
2	Abu Thaylah		26,75	26,75	00:35	08:05
<b>SS2</b>		<b>339,52</b>				<b>08:10</b>
2A	SS2 STOP			339,52	(03:30)	(11:40)
2B	Losail Bivouac IN		96,34	96,34	01:35	(13:15)
<b>Leg 2 totals</b>		<b>339,52</b>	<b>123,09</b>	<b>462,61</b>		

Leg 2

### Thursday, 20 April 2017

2C	Losail Bivouac OUT - START Leg 3					07:30
3	Rawdat Rasid		67,60	67,60	01:10	08:40
<b>SS3</b>		<b>343,71</b>				<b>08:45</b>
3A	SS3 STOP			343,71	(03:30)	(12:15)
3B	Losail Bivouac IN		93,72	93,72	01:35	(13:50)
<b>Leg 3 totals</b>		<b>343,71</b>	<b>161,32</b>	<b>505,03</b>		

Leg 3

### Friday, 21 April 2017

3C	Losail Bivouac OUT - START Leg 4					07:30
4	Sealine		88,46	88,46	01:30	09:00
<b>SS4</b>		<b>350,65</b>				<b>09:05</b>
4A	SS4 STOP			350,65	(03:30)	(12:35)
4B	Losail Bivouac IN		62,36	62,36	01:05	(13:40)
<b>Leg 4 totals</b>		<b>350,65</b>	<b>150,82</b>	<b>501,47</b>		

Leg 4

### Saturday, 22 April 2017

4C	Losail Bivouac OUT - START Leg 5					07:00
5	Al Zubara		93,27	93,27	01:30	08:30
<b>SS5</b>		<b>341,59</b>				<b>08:35</b>
5A	SS5 STOP			341,59	(03:30)	(12:05)
5B	Losail Parc Fermé IN		96,51	96,51	01:35	(13:40)
<b>Leg 5 totals</b>		<b>341,59</b>	<b>189,78</b>	<b>531,37</b>		

Leg 5

TOTALS OF THE RALLY					
	SS	Liaison	Total		%
Leg 1	4,50	10,50	15,00	%	30,0%
Leg 2	339,52	123,09	462,61	Special	73,4%
Leg 3	343,71	161,32	505,03	Stages	68,1%
Leg 4	350,65	150,82	501,47		69,9%
Leg 5	341,59	189,78	531,37		64,3%
<b>Total</b>	<b>1379,97</b>	<b>635,51</b>	<b>2015,48</b>		<b>68,5%</b>

v2 (03.02.2017)

(xx:xx) = estimated time



## APPENDIX 2 – ORGANIZER'S ADVERTISING

---

*tba*

## APPENDIX 3 – COMPETITORS' RELATIONS OFFICER

---



**David Patterson**

**Schedule:** *tba*

### 1. ROAD BOOK AND NAVIGATION EQUIPMENT

Each rally vehicle must be equipped with:

- a GPS kit from ERTF;
- a Sentinel kit from ERTF;
- an Iritrack kit from TDCOM.

All order forms are available from the organizers and the rally website.

### 2. FIRST AID KIT

The FIRST AID KIT, in a small sealed rigid container, and identified as such should include:

- eye lotion (boroclarine, stilla or equivalent)
- disinfectant cream (betadine, biafine or equivalent)
- pain killers (aspirin or equivalent)
- a haemostatic (coagulant)
- anti diarrhoea tablets (immodium or equivalent)
- sun cream for the skin and lips
- selection of sterile bandages, plasters, safety pins
- re-hydration powder

### 3. SURVIVAL EQUIPMENT

- Small hand shovel
- 9 metre long recovery towing strap
- Cigarette lighter
- Compass
- Torch and spare batteries
- 5 litres of water for each member of the crew
- Aluminium blanket (2m x 1m) per crew member
- 1 emergency communications device (**telephone only**)
- Mirror
- 1 extended flashing torch/strobe light

### 4. ORGANISERS SAFETY MEASURES

#### 4.1 Mobile phone (recommended but not compulsory)

The organizers recommend the use of a mobile phone. Emergency Numbers can be called in case of injuries or important material damages during the race (mechanical problem or crash) – see article 29 of 2017 FIA Cross-Country Rally General Prescriptions.

#### 4.2 Survival Rations

The Organisers will provide Emergency Survival Rations and bottled water to each competitor during distribution of the Road Book the evening prior to the Leg.


#### 4.3 Bivouac Camp

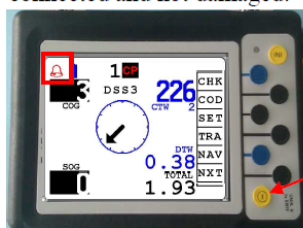
The organisers will provide the essential hygiene facilities and catering arrangements and tents. Competitors and service are advised to bring their own personal tents, sleeping bags and other basic camping equipment.

#### 4.4 Medical Services

Fully trained doctors and nurses will be on duty throughout the event to cope with emergency situations. All local hospitals in the vicinity will be alerted to receive casualties. An equipped medical clinic will be on 24-hour stand-by duty at the bivouac. A medically equipped helicopter, with trained staff, will be available during the event. In addition all helicopters will carry one trained medical person on board.

### GPS activation

**The bell** : satellites non-reception indicator.   
Appears during a few minutes at the power on.  
If it still appears, check if the antenna and its cable are connected and not damaged.



On/Off

**Put on the light** by SET then LIGHT

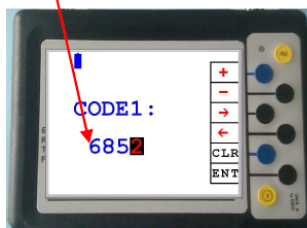
### Day code

4 digit code given during the briefing and displayed every evening at the bivouac.

Load the wpt for the next leg.

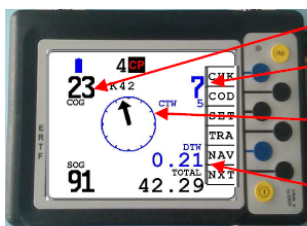
To enter the code :

- push on the COD key from INI (NAV for bikes)
- press CD 1
- enter the code with +, -, ← or → keys
- validate by ENT



**Navigation** : Press the INI key

Screen when inside the unmasked radius or visible waypoint (WPM) :



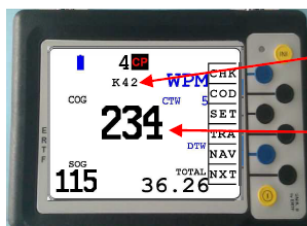
COG : Course followed by vehicle

CTW : Direct course to the Wpt

The arrow : indicates the direction to the target waypoint.

Direct distance to waypoint in km

Information concerning WPM (masked waypoints) when outside unmasked radius :



Name of the next waypoint

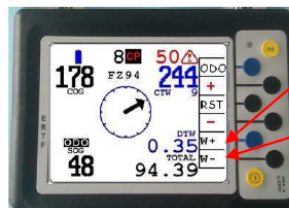
COG : Course followed

A waypoint is reached when the vehicle is in the radius defined for the wpt (200m or 90m). The GPS switches automatically to the next waypoint.

!!! Information will be true only if there is no bell symbol on the top of the screen

### Change of a waypoint

If a Wpt can't be reached or if you don't want to reach it, press NXT on the INI screen (NAV for bikes).




W+ : to go to the next waypoint

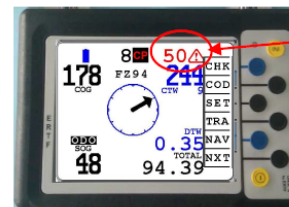
W- : to come back to the previous waypoint


Give more importance the waypoint's name than to its number.

### Speed limit

Symbol  :

- GPS checks the max speed
- blinks and rings, and records if overspeed



Symbol  (DZ):

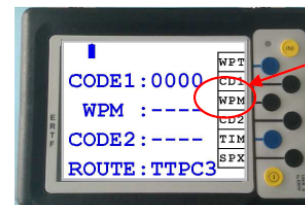
- GPS checks the speed in the village (30,50 or 90 km/h)
- blinks and rings if overspeed.

It stops when the wpt FZ is passed.

### Releasing code WPM

Given by Iritrack calling.

Using it is penalized.



To turn masked wpts into visible wpts and give access to all navigation information concerning these wpts

### Odometer function ODO and OD+

Reset PARTIAL to 0 with RST.

Adjust TOTAL by + and -.

To reset PARTIAL to 0



Direct adjust of hundreds meters of TOTAL

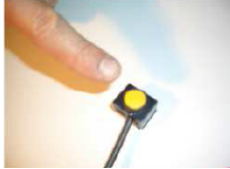
Automatic adjust at each Wpt, message « Adjust OK ».

## APPENDIX 6 – VEHICLE TO VEHICLE ALARM SYSTEM / Instructions for the use

### “Sentinel” FUNCTION OF GPS UNIK II USER MANUAL

#### Overtaking

You want to overtake : press for a long time (**more than 2s**) on the push-button to send a signal to the vehicle ahead (less than 200m).



Somebody wants to overtake you : **you hear Beep beep beep – Beep beep beep**  
Get ready to let the vehicle pass a.s.a.p.



To inform the vehicle which wants to overtake that you **have heard** is signal and that you are going to let him pass a.s.a.p.

**Press briefly the push-button (less than 2s - which cuts the sound in the cockpit)**

If you don't acknowledge receipt of the signal, an acknowledgement of receipt is automatically sent at the end of 6s.



#### Buzzer volume

From main navigation screen, press SET key and then SENTINEL key  
3 positions : 1 / 2 / 3



#### « Speedox » function : sound indication in speed control area

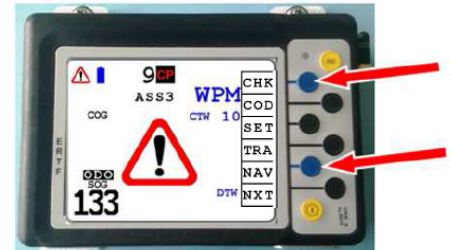
From main navigation screen, press SET key and then SENTINEL key  
3 positions : SECURITY / PERFORMANCE / OFF

SECURITY Mode		PERFORMANCE Mode		OFF Mode
2 beeps per second from the speed limit – 5 km/h	Continuous sound from the speed limit – 3 km/h	1 beep by minute from the speed limit – 4 km/h	Continuous sound from the speed limit – 2 km/h	No sound signal

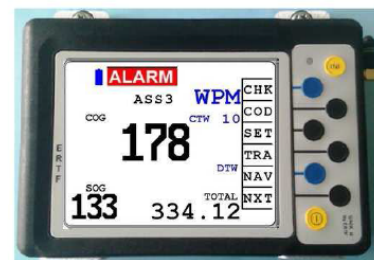
#### Accident

If you breakdown or if you have a crash **in a dangerous place (after a turn or a dune)**: press **both blue keys simultaneously or red Alarm button**, you will send a signal to the competitors maximum 500m around regarding the ground.

To stop it, press again **both blue keys simultaneously or red Alarm button**

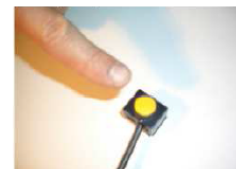


There is an accident near by : you hear **Beeeeeep – beeeeeeep – beeeeeeep**  
**flash blinks and GPS shows :**



*Flash Optional*

To stop the sound during (1 minute) in the cockpit  
Press **briefly** the push-button (less than 2s)



## SLC – User Manual

### 1. Power Button. Cannot be used by competitors.

This button can only be used by members of Cronobandeira.  
It is the competitor's responsibility to ensure that this button is not under pressure when in the pocket.



### 2. Volume buttons.

When on a call can be used to increase or decrease the volume of speaker.



### 3. 'Everything OK' button.

This button can be used to inform the organization that all is well.  
Press the button until you feel the vibration. No call will be made.



### 4. SOS button.

In case of emergency you must press this button until you feel the vibration.

The equipment makes an immediate phone call to the base.

At this time you should use the equipment as a mobile phone.

The use of the SOS system without justification implies penalties described in the regulations of the event.

The GPS will be placed in a bag on the roll bar next to the copilot.

The GPS will be supplied and collected in the closed park at the Start / Finish of each Leg.